

## COLORS



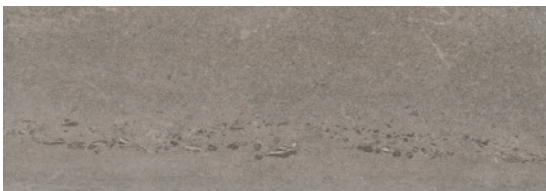
White



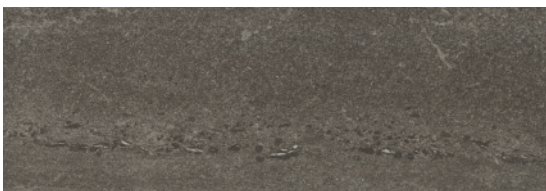
Beige



Light Gray

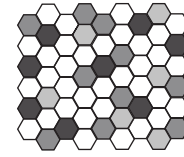
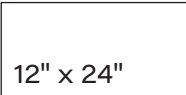


Dark Gray



Black

## AVAILABLE SIZES



1.5" Hexagon Mosaic\*

\*Ceramic Mosaic only available in Beige, Gray and Black Blends  
**Thickness : 1/4" | Recommended Grout: 1/8"**

## FINISH

MATTE PRESSED

## THICKNESS

5/16"

## TRIM

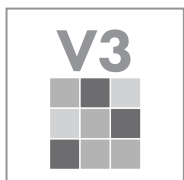
3" x 24" Bullnose

## INSTALLATION & MAINTENANCE

Recommended Grout Size - 3/16"

For regular cleaning, use a neutral liquid detergent with a soft sponge or microfiber cloth. Persistent stains can be removed with a slightly abrasive sponge; if necessary, use a specially formulated stain remover.

## TECHNICAL DATA



D.C.O.F. WET
<b>≥ 0.42</b>
BOT 3000

WATER ABSORPTION
MOSAIC <b>&lt; 3.0%</b>
FLOOR <b>&lt; 0.5%</b>
ASTM C373

CHEMICAL RESISTANCE
<b>RESISTANT</b>
ASTM C650

BREAKING STRENGTH
MOSAIC <b>&gt;250 LBS</b>
FLOOR <b>&gt;275 LBS</b>
ASTM C648

ABRASION RESISTANCE
<b>PEI III</b>
ASTM C 1027

STREAMS

