

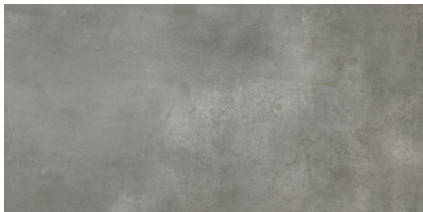
COLORS



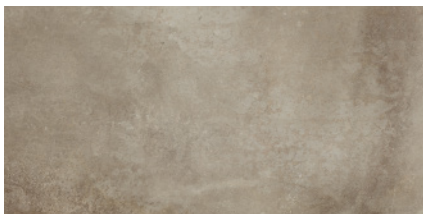
Lithium



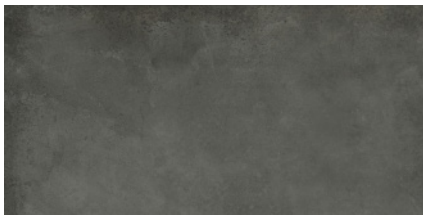
Chromium



Titanium

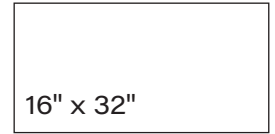
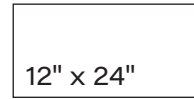
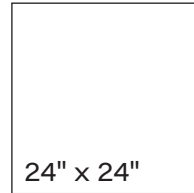
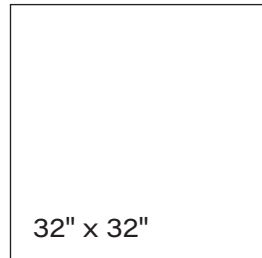


Iron



Oxide

AVAILABLE SIZES



2" x 2"
Mosaic

FINISH

MATTE RECTIFIED

THICKNESS

10mm (32" x 32" & 16" x 32")
9mm (24" x 24" & 12" x 24")

TRIM

3" x 24" Bullnose

INSTALLATION & MAINTENANCE

Recommended Grout Size - 1/8"

For regular cleaning, use a neutral liquid detergent with a soft sponge or microfiber cloth. Persistent stains can be removed with a slightly abrasive sponge; if necessary, use a specially formulated stain remover.

TECHNICAL DATA

	<p>D.C.O.F. WET ≥ 0.42 ANSI A137.1</p>	<p>WATER ABSORPTION ≤ 0.5% ISO 10545-3</p>	<p>CHEMICAL RESISTANCE CLASS A ISO 10545-13</p>	<p>FROST RESISTANCE RESISTANT ISO 10545-12</p>	<p>BREAKING STRENGTH ≥ 330 LBF ISO 10545-4</p>	<p>ABRASION RESISTANCE PEI 4 ISO 10545-7</p>
--	---	---	--	---	---	---

