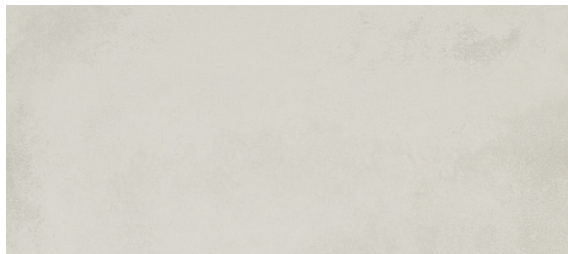


COLORS



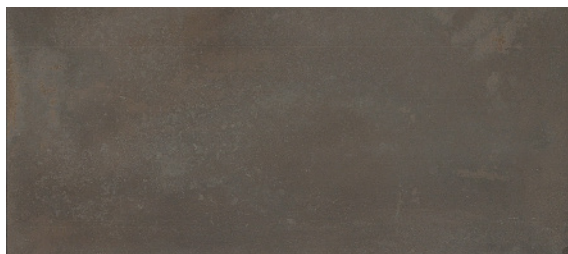
White



Alloy

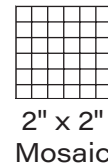
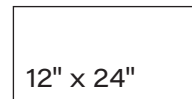
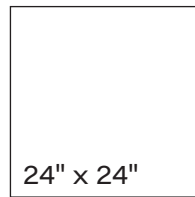


Gray



Black

AVAILABLE SIZES



FINISH

MATTE RECTIFIED

THICKNESS

9.5 mm

TRIM

3" x 24" Bullnose
6" x 12" Cove Base

INSTALLATION & MAINTENANCE

Recommended Grout Size - 1/8"

For regular cleaning, use a neutral liquid detergent with a soft sponge or microfiber cloth. Persistent stains can be removed with a slightly abrasive sponge; if necessary, use a specially formulated stain remover.

TECHNICAL DATA

	<p>D.C.O.F WET</p> <p>0.42</p> <p>ANSI 137.1</p>	<p>WATER ABSORPTION</p> <p>≤ 0.5%</p> <p>ASTM C373</p>	<p>CHEMICAL RESISTANCE</p> <p>UNAFFECTED</p> <p>ASTM C650</p>	<p>FROST RESISTANCE</p> <p>NO DAMAGE</p> <p>ASTM C1026</p>	<p>BREAKING STRENGTH</p> <p>>=400 LBS</p> <p>ASTM C648</p>	<p>MOHS HARDNESS</p> <p>6</p> <p>MOHS</p>
--	---	---	--	---	--	--

LAVA

