



GLAZED & UNGLAZED PORCELAIN TILE

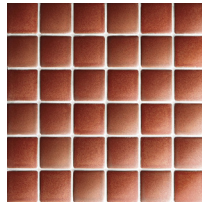
MADOKA-R



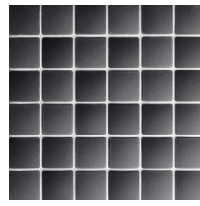
White



Moss Green



Red



Matte Black

SIZE

11.2" x 11.2" Sheet

FINISH

GLAZED WALL TILE

THICKNESS

9.5 mm



FORMAT-MIX



White



Black

SIZE

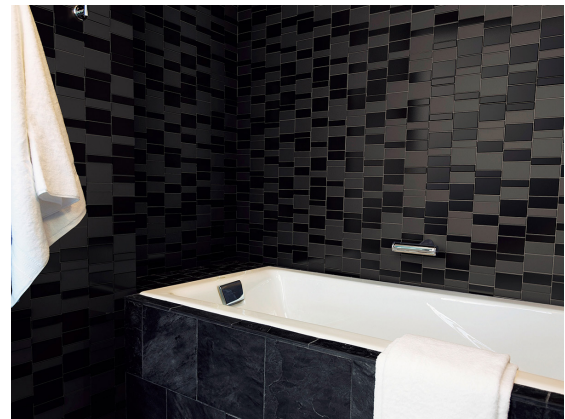
11.97" x 13.06" Sheet

FINISH

GLAZED WALL TILE

THICKNESS

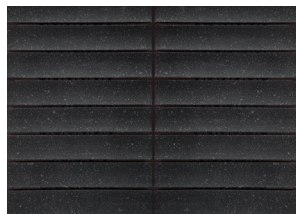
7 mm - 9.5 mm



SAIRIN



Matte White



Matte Black

SIZE

7.68" x 11.61" Sheet

FINISH

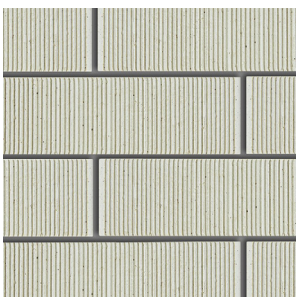
WALL TILE

THICKNESS

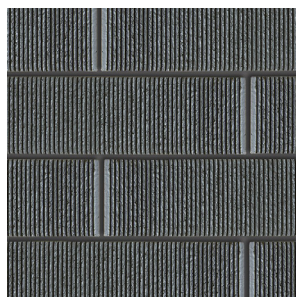
9.5 mm



HIKKAKI



White



Black

SIZE

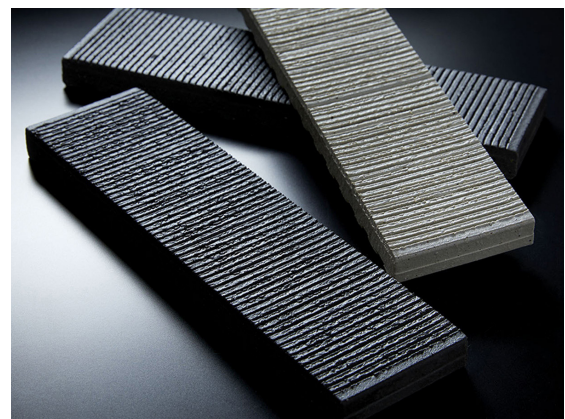
2.3" x 8.9"

FINISH

GLAZED WALL TILE

THICKNESS

15 mm

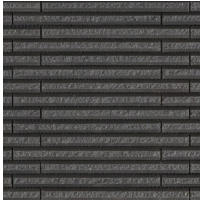


HIKARI & KAGE

HOSOWARI BORDER



White



Black



Light Beige



Dark Brown

SIZE

9.25" x 11.85" Sheet

FINISH

UNGLAZED WALL TILE

THICKNESS

13.5 mm



HOMURA



Light Beige



Light Brown



Black

SIZE

1.77" x 9.25"

FINISH

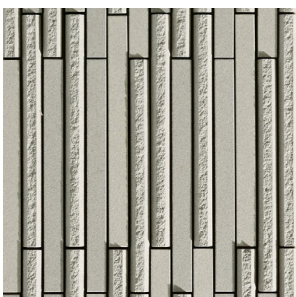
GLAZED WALL TILE

THICKNESS

12 mm



OMBER BORDER



Grey



Black

SIZE

9.25" x 11.85" Sheet

FINISH

UNGLAZED WALL TILE

THICKNESS

8 mm & 13.5 mm

