



HOME



PORCELAIN TILE

COLORS



Redflame



Goldensun



Darkpeat



Bluelagoon



Whitepastel



Amberpeach

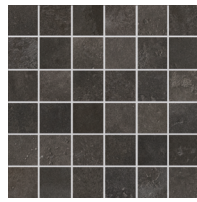
DECOS



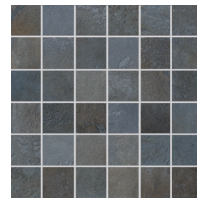
Redflame
2" x 2" Mosaic



Goldensun
2" x 2" Mosaic



Darkpeat
2" x 2" Mosaic



Bluelagoon
2" x 2" Mosaic



Whitepastel
2" x 2" Mosaic



Amberpeach
2" x 2" Mosaic



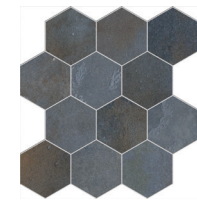
12" x 13"
Hex Mosaic



12" x 13"
Hex Mosaic



12" x 13"
Hex Mosaic



12" x 13"
Hex Mosaic



12" x 13"
Hex Mosaic



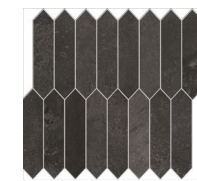
12" x 13"
Hex Mosaic



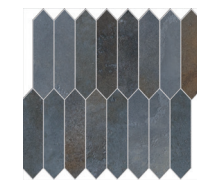
12" x 10"
Picket Mosaic



12" x 10"
Picket Mosaic



12" x 10"
Picket Mosaic



12" x 10"
Picket Mosaic



12" x 10"
Picket Mosaic



12" x 10"
Picket Mosaic



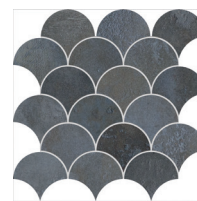
12" x 12"
Shell Mosaic



12" x 12"
Shell Mosaic



12" x 12"
Shell Mosaic



12" x 12"
Shell Mosaic

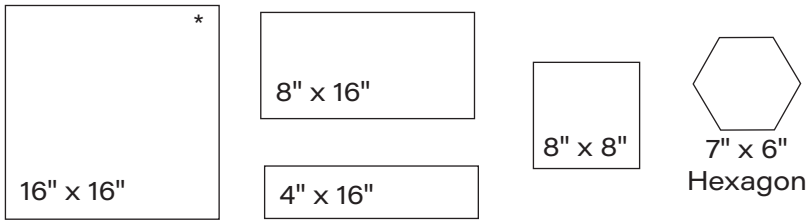


12" x 12"
Shell Mosaic

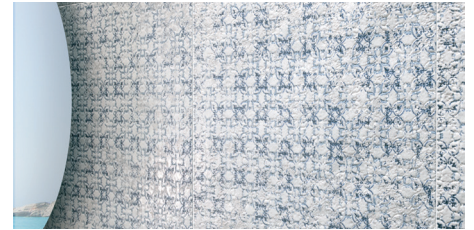


12" x 12"
Shell Mosaic

AVAILABLE SIZES



*Antislip ONLY available in this size.
 *Antislip NOT available in White Pastel.



Majolica Deco
 Available in 16" x 16" | 4" x 16" | 8" x 8"

FINISH

MATTE RECTIFIED
 GRIP RECTIFIED

THICKNESS

9mm

TRIM

2" x 16" Bullnose
 16" x 16" Stair Tread
 16" x 16" Corner Stair Tread



INSTALLATION & MAINTENANCE

Recommended Grout Size - 1/8"

For regular cleaning, use a neutral liquid detergent with a soft sponge or microfiber cloth. Persistent stains can be removed with a slightly abrasive sponge; if necessary, use a specially formulated stain remover.

TECHNICAL DATA

	D.C.O.F. WET MATTE ≥ 0.42 ANTISLIP ≥ 0.70 BOT 3000	WATER ABSORPTION $\leq 0.5\%$ ISO 10545-3	CHEMICAL RESISTANCE GA GLA GHA ISO 10545-13	FROST RESISTANCE NO DAMAGE ISO 10545-12	BREAKING STRENGTH $\geq 43 \text{ N/mm}^2$ ISO 10545-4	ABRASION RESISTANCE CLASS 5 ISO 10545-7
--	---	---	--	--	--	--

