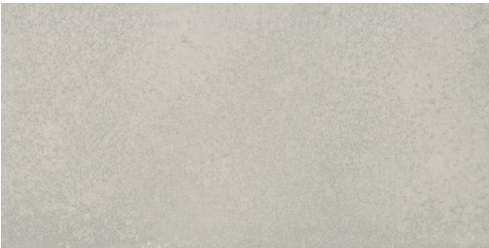


COLORS



Glacier



Stone

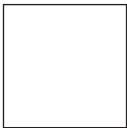


Forge

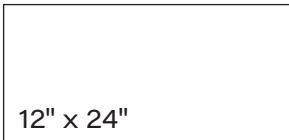


Carbon

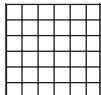
AVAILABLE SIZES



13" x 13"



12" x 24"



2" x 2"
Mosaic

FINISH

MATTE PRESSED

THICKNESS

7.6mm - 13" x 13"

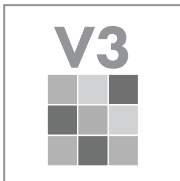
8.4mm - 12" x 24"

INSTALLATION & MAINTENANCE

Recommended Grout Size - 3/16"

For regular cleaning, use a neutral liquid detergent with a soft sponge or microfiber cloth. Persistent stains can be removed with a slightly abrasive sponge; if necessary, use a specially formulated stain remover.

TECHNICAL DATA



D.C.O.F.
WET
≥ 0.60
ANSI A 137.1

WATER
ABSORPTION
< 0.5%
ASTM C373

CHEMICAL
RESISTANCE
CLASS A
ASTM C650

FROST
RESISTANCE
PASS
ASTM C1026

BREAKING
STRENGTH
> 350
ASTM C648

ABRASION
RESISTANCE
CLASS 4
ASTM C1027

